



NOTICE OF WATER SERVICE SHUTDOWN
AFFECTING PROPERTIES ON SNOW WATER PLACE
ON THURSDAY, OCTOBER 31ST, 2024, FROM 9:00 A.M. TO 6:00 P.M.

Due to a planned system maintenance shutdown, water service will be temporarily disrupted as indicated above. Also, there may be fluctuating pressure and/or air in the water for a short period thereafter.

You should expect water service interruption to occur during the entire time as indicated above. Please plan accordingly by making private arrangements for adequate water if you cannot be without water during this time. You may want to consider storing water in a bathtub for toilet flushing during this time.

If your home or business has a fire alarm system that automatically alerts your alarm monitoring company when the water pressure drops, you will need to notify them, prior to the scheduled shutdown time, to prevent any false alarms being sent to the Fire Department.

We appreciate your understanding and apologize for any inconvenience caused. We will strive to restore normal service as quickly as possible.

Brian Vigil

Brian Vigil
Field Maintenance Superintendent – Preventative Maintenance
951-674-3146 x 8218

Our Mission...

The EVMWD team delivers total water management that powers the health and vibrancy of its communities so life can flourish.



AVISO DE INTERRUPCION DE SERVICIO DE AGUA

SNOW WATER PLACE

**FECHA DE
INTERRUPCION:** HORAS ENTRE JUEVES, OCTUBRE 31, 2024, 9:00 A.M. – 6:00 P.M.

TEMA: Interrupción o baja presión en servicio de agua

Debido a un cierre planificado por mantenimiento del sistema, el servicio de agua se verá temporalmente interrumpido según lo indicado anteriormente. Además, puede haber fluctuaciones de presión y/o aire en el agua durante un breve período después de la interrupción.

Es importante que tenga en cuenta que la interrupción del servicio de agua ocurrirá durante todo el tiempo indicado arriba. Le pedimos que se prepare haciendo arreglos privados para contar con suficiente agua si no puede prescindir de ella durante este período. Puede considerar almacenar agua en una bañera para usar en el inodoro durante este tiempo.

Si su hogar o negocio cuenta con un sistema de alarma contra incendios que alerta automáticamente a su empresa de monitoreo de alarmas cuando la presión del agua disminuye, deberá notificarles antes del horario programado de cierre para evitar que se envíen falsas alarmas al Departamento de Bomberos.

Agradecemos su comprensión y nos disculpamos por cualquier inconveniente que esto pueda causar. No esforzaremos por restaurar el servicio normal lo más rápido posible.

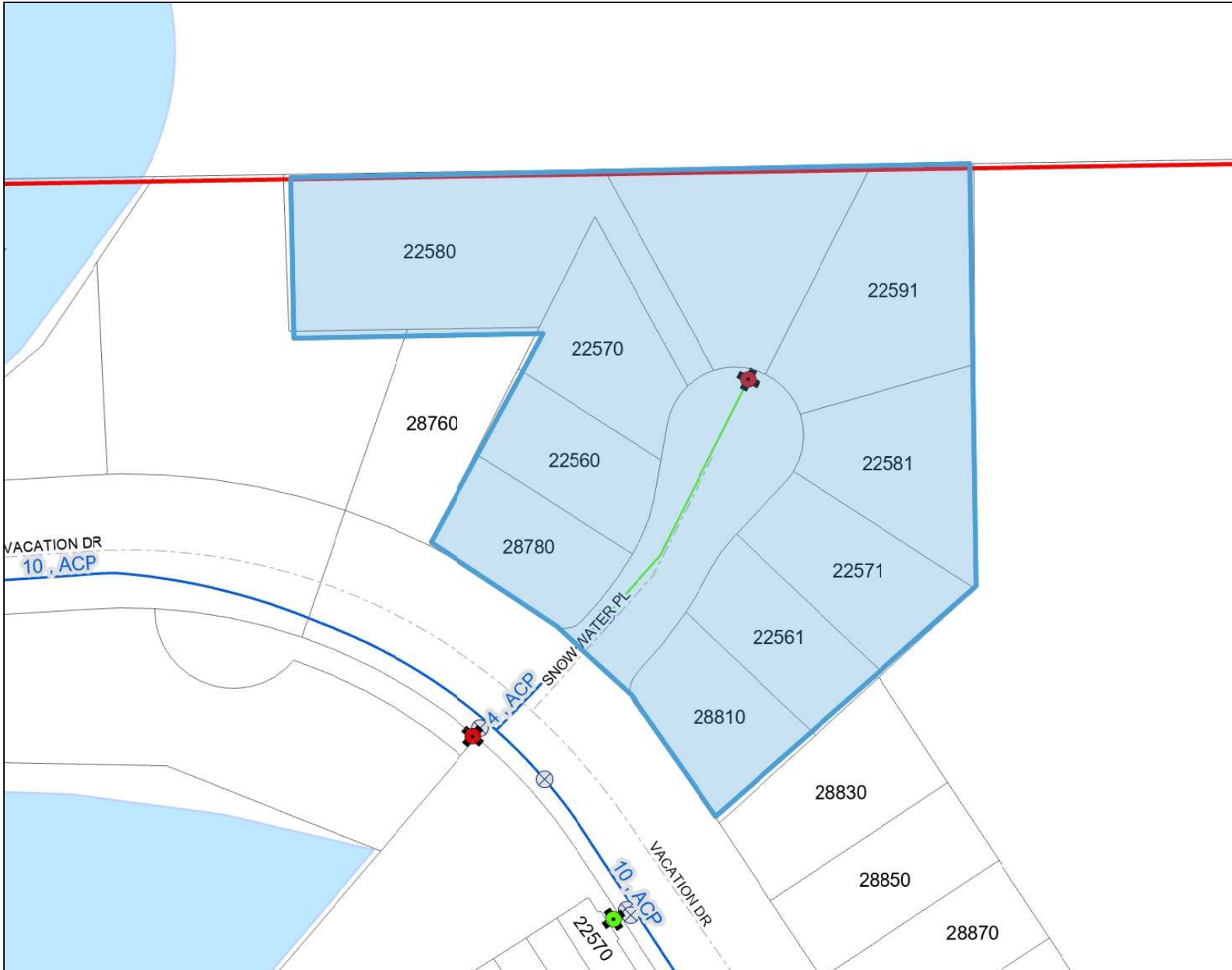
Brian Vigil

Brian Vigil
Field Maintenance Superintendent – Preventative Maintenance
951-674-3146 x 8218

Our Mission...

The EVMWD team delivers total water management that powers the health and vibrancy of its communities so life can flourish.

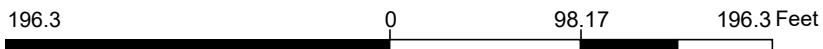
Snow Water Shutdown



Legend

- EMWD Recycled Water Lines
- Inactive Pressure Main
- EVMWD Boundary
- Highways
- Street Centerlines
- Parcels
- Label House Number
- Waterbodies
- Ag Line**
 - Ag Line
 - Open Canal
 - Siphon
- Recycled Meters
- Facilities Pump
- Facility Air Release Valve
- Facility Control Valve**
 - Altitude
 - Check
 - Pressure Reducing
 - Pressure Regulating
 - Pressure Relief
 - Pressure Sustaining
 - Pump Control
- Facility Meter
- Facility Valves**
 - Gate Valve
 - Butterfly Valve

1: 1,178



Data Sources: EVMWD, County of Riverside

This application has been provided to give a visual display of District facilities and related geographic information. To be sure of complete accuracy, please check with Engineering staff for the most up to date information.

10/29/2024 10:40:43 AM

Notes