

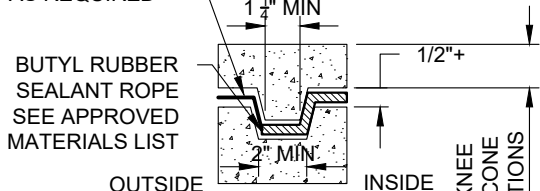
SECTION A-A

(SIDE INLETS NOT SHOWN)

SECTION B-B

(SIDE INLETS NOT SHOWN)

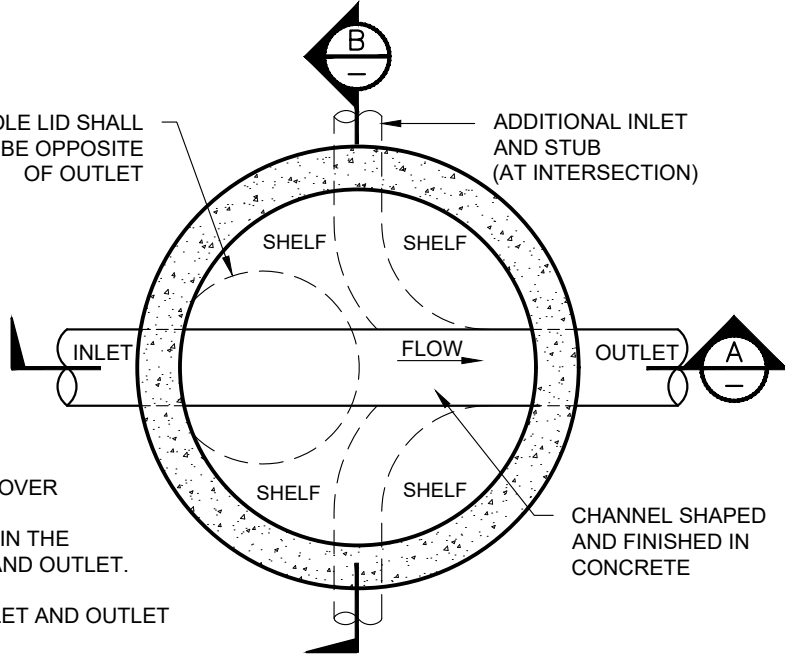
FILL JOINTS WITH MORTAR AS REQUIRED



JOINT DETAIL

MANHOLE LID SHALL BE OPPOSITE OF OUTLET

ADDITIONAL INLET AND STUB (AT INTERSECTION)



SECTION C-C

(PLAN MANHOLE BASE)

NOTES:

1. SEE STANDARD SPECIFICATIONS FOR MANHOLE, MANHOLE LINING, MANHOLE PATCHING AND REPAIR REQUIREMENTS.
2. VERTICAL WALL OF CONE SHALL BE ON THE UPSTREAM SIDE OF THE MANHOLE.
3. REINFORCEMENT SHALL HAVE A MINIMUM OF 2' CLEAR COVER TO INSIDE FACE OF MANHOLE.
4. MANHOLES AT INTERSECTIONS SHALL HAVE STUB OUTS IN THE OTHER TWO DIRECTIONS WITH RESPECT TO THE INLET AND OUTLET. SEE SECTION 2.04B OF THE DESIGN STANDARDS.
5. SEE SECTION 2.04B OF THE DESIGN STANDARDS FOR INLET AND OUTLET PIPES OF DIFFERENT SIZES.
6. DROP ACROSS MANHOLE SHALL BE 0.1' MIN. SEE DESIGN STANDARDS SECTION 2.04B-5b FOR SPECIFIC DIRECTIONS.
7. SHALLOW MANHOLES MAY REQUIRE MODIFICATIONS TO THIS STD. DWG. ALL MODIFICATIONS SHALL BE APPROVED BY EVMWD.

REVISION	BY	APPR	DATE
DIMS AND NOTES	AK	JZ	04-01-24

ELSINORE VALLEY
MUNICIPAL WATER DISTRICT

06/22/2023
PARAG KALARIA R.C.E. 83927 DATE

5' DIA. MANHOLE WITH CAST IN PLACE BASE

STD. DWG. NO.
S-5