



NOTICE OF WATER SERVICE SHUTDOWN
AFFECTING PROPERTIES ON GRANITE DOME PL.
ON THURSDAY, MARCH 9, 2023, FROM 9:00 A.M. TO 6:00 P.M.

Due to a planned system maintenance shutdown, water service will be temporarily disrupted as indicated above. Also, there may be fluctuating pressure and/or air in the water for a short period thereafter.

You should expect water service interruption to occur during the entire time as indicated above. Please plan accordingly by making private arrangements for adequate water if you cannot be without water during this time. You may want to consider storing water in a bathtub for toilet flushing during this time.

If your home or business has a fire alarm system that automatically alerts your alarm monitoring company when the water pressure drops, you will need to notify them, prior to the scheduled shutdown time, to prevent any false alarms being sent to the Fire Department.

We appreciate your understanding and apologize for any inconvenience caused. We will strive to restore normal service as quickly as possible.

Brian Vigil

Brian Vigil
Field Maintenance Superintendent – Preventative Maintenance
951-674-3146 x 8218

Our Mission...

EVMWD will provide reliable, cost-effective, high quality water and wastewater services that are dedicated to the people we serve.



AVISO DE INTERRUPCION DE SERVICIO DE AGUA

GRANITE DOME PL.

FECHA DE INTERRUPCION: HORAS ENTRE JUEVES, MARZO 9, 2023, 9:00 A.M. – 6:00 P.M.

TEMA: Interrupción o baja presión en servicio de agua

Debido a mejoras planeadas al sistema de agua, el servicio de agua será interrumpido temporalmente en la fecha indicada arriba. Es muy probable que haya fluctuaciones en la presión y/o aire en el agua por un corto periodo de tiempo despues de la interrupción del servicio.

Usted debería esperar interrupción del servicio de agua durante el tiempo especificado arriba. Por favor, planeé por adelantado conseguir agua a traves de otra fuente, si la va a necesitar durante el tiempo citado.

Si su hogar o negocio tienen un sistema de alarma contra incendios que avisa automáticamente a su compañía de monitoreo de alarmas cuando baja la presión de agua, es necesario avisarles antes de la fecha citada, y ponerles sobre aviso para evitar falsas alarmas, y evitar que llamen al Departamento de Bomberos.

Por favor disculpe la inconveniencia y trataremos de restaurar el servicio tan pronto como sea posible.

Gracias,

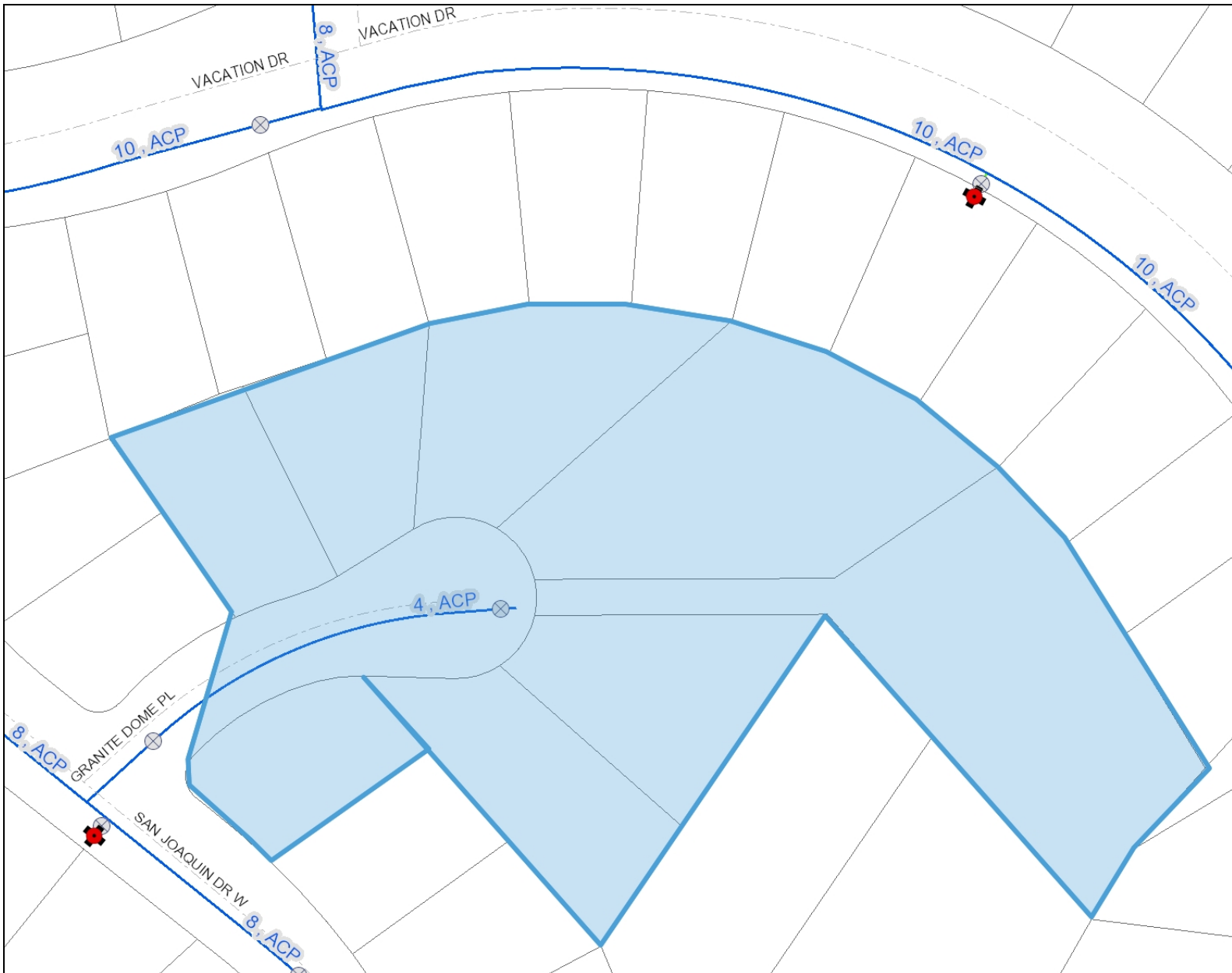
Brian Vigil

Brian Vigil
Field Maintenance Superintendent – Preventative Maintenance
951-674-3146 x 8218

Our Mission...

EVMWD will provide reliable, cost-effective, high quality water and wastewater services that are dedicated to the people we serve.

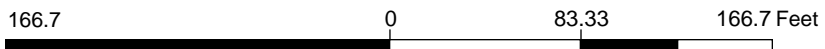
Granite Dome Shutdown



Legend

- EMWD Recycled Water Lines
- Inactive Pressure Main
- EVMWD Boundary
- Highways
- Street Centerlines
- Parcels
- Waterbodies
- Ag Line
 - Ag Line
 - Open Canal
 - Siphon
- ⊕ Recycled Meters
- Facilities Pump
- ▲ Facility Air Release Valve
- Facility Control Valve
 - ⬆ Altitude
 - Check
 - ⊙ Pressure Reducing
 - ⊙ Pressure Regulating
 - ⊙ Pressure Relief
 - ⊙ Pressure Sustaining
 - ⊙ Pump Control
- Facility Meter
- Facility Valves
 - ⊗ Gate Valve
 - Butterfly Valve
 - Plug Valve

1: 1,000



Data Sources: EVMWD, County of Riverside

This application has been provided to give a visual display of District facilities and related geographic information. To be sure of complete accuracy, please check with Engineering staff for the most up to date information.

3/6/2023 3:50:44 PM

Notes