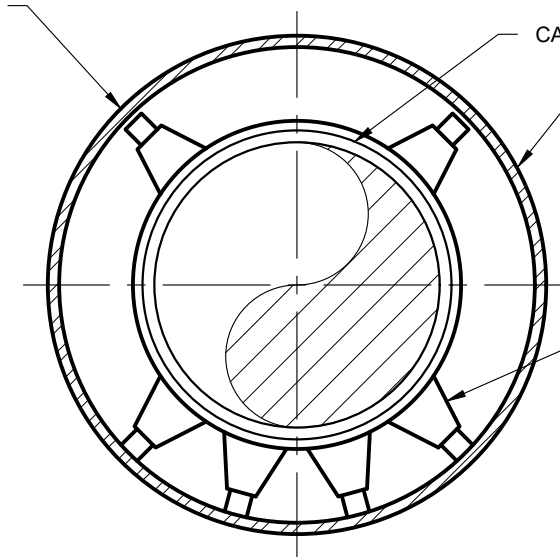


STEEL PIPE WITH MINIMUM PLATE THICKNESS AND MINIMUM INSIDE DIAMETER PER SCHEDULE HEREON



CARRIER PIPE CENTERED IN CASING

ANY VOIDS CREATED BY BORING, JACKING OR TUNNELING SHALL BE FILLED WITH PRESSURE GROUT

1. FOR PVC OR HDPE CARRIER PIPE, USE POLYETHYLENE CASING INSULATORS WITH POLYETHYLENE SKIDS.
2. FOR DUCTILE IRON CARRIER PIPE, USE STAINLESS STEEL BAND SPACERS AND INSULATORS WITH GLASS FILLED POLYMER PLASTIC RUNNERS.
3. ALL CASING INSULATORS SHALL BE DESIGNED BY THE MANUFACTURER FOR APPLICATION GIVEN THE PARTICULAR CARRIER PIPE O.D. AND CASING PIPE I.D.
4. ALL BOLTS AND BANDS SHALL BE TYPE 304 STAINLESS STEEL.
5. FILL ANNULAR SPACE AROUND CARRIER PIPE WITH AIR BLOWN SAND (SE30 OR GREATER).

CASING SCHEDULE

NOMINAL PIPE SIZE	MINIMUM CASING SIZE	MIN. WALL
8"	16" I.D.	1/4"
12"	20" I.D.	5/16"
16"	30" I.D.	3/8"
18"	32" I.D.	3/8"
20"	36" I.D.	3/8"
24"	42" I.D.	1/2"
30"	48" I.D.	1/2"
36"	56" I.D.	5/8"
42"	60" I.D.	3/4"

NOTES:

1. SPACING BETWEEN THE CASING INSULATORS SHALL BE PER THE MANUFACTURERS RECOMMENDATIONS EXCEPT THAT THERE SHALL BE AT LEAST 4 CASING INSULATORS PER PIPE SECTION, ONE 12" FROM EACH JOINT AND ONE CENTERED. ADDITIONALLY, ONE INSULATOR SHALL BE INSTALLED 12" FROM EACH END OF THE CASING.
2. BOTH ENDS OF THE CASING BETWEEN THE CASING AND CARRIER PIPE MUST BE SEALED WATERTIGHT USING AN END SEAL, SELECTED FROM APPROVED MATERIALS LIST. BANDS SHALL BE TYPE 304 STAINLESS STEEL.
3. ALL STEEL CASING PIPE JOINTS SHALL BE WELDED FULL CIRCUMFERENCE.
4. MATERIALS SHALL BE SELECTED FROM THE APPROVED MATERIALS LIST.
5. ABOVE CASING THICKNESS ARE FOR OPEN TRENCH ONLY. FOR JACKED CASING SEE STANDARD SPECIFICATIONS FOR PUBLIC WORKS CONSTRUCTION SECTION 307, MOST RECENT EDITION.
6. HDPE CASING MAY BE USED IF MEETS ADEQUATE STRENGTH FOR GEOTECHNICAL CONDITIONS AND WITH WRITTEN APPROVAL FROM THE DIRECTOR OF ENGINEERING.

REVISION	BY	APPR	DATE

PARAG KALARIA R.C.E. 83927 DATE 06/22/2023

STEEL CASING FOR WATER MAINS

STD. DWG. NO.

W-6