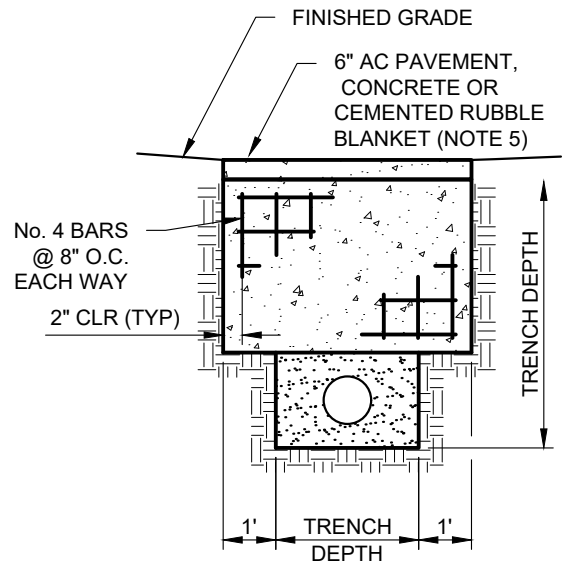
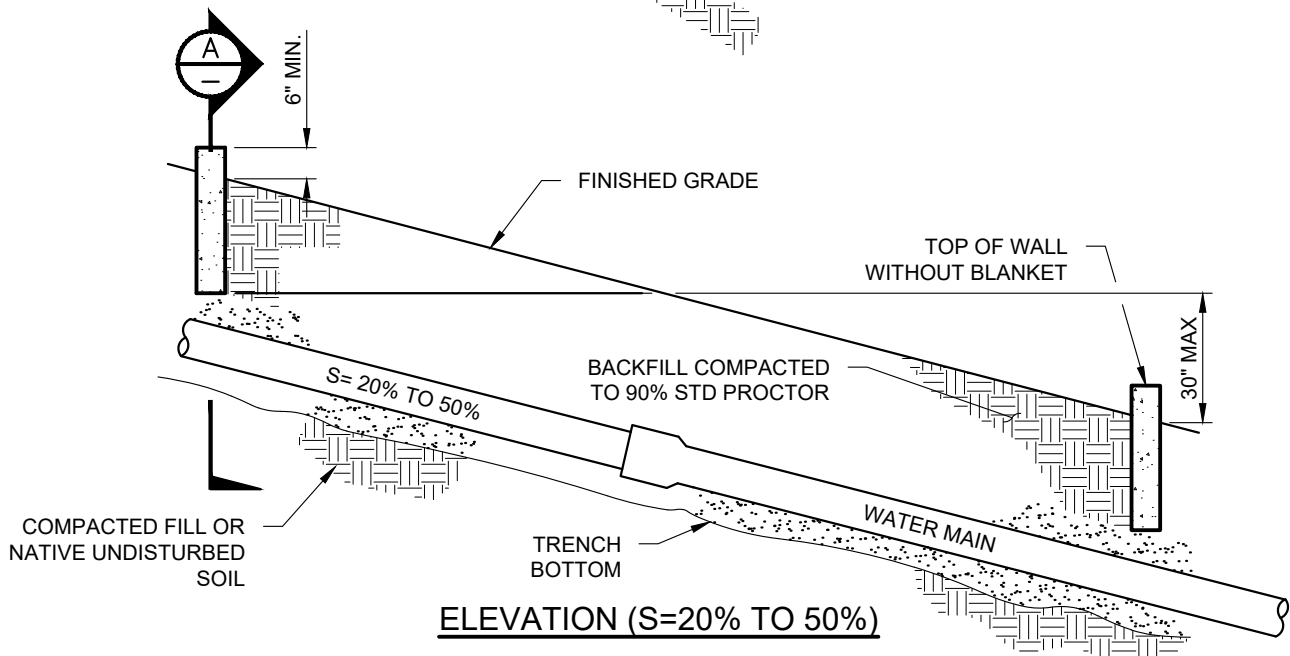


ELEVATION (S>50%)



SECTION A-A



ELEVATION (S=20% TO 50%)

NOTES:

1. PRIOR CONCURRENCE OF THE DISTRICT ENGINEER REQUIRED FOR USE, SUBMITTALS WILL BE REQUIRED.
2. WALL SHALL BE REINFORCED CONCRETE, SEE SPECIFICATIONS.
3. CONCRETE WALLS SHALL BE PLACED AGAINST FIRM MATERIAL.
4. FOR GRADES OVER 50%, SLOPE PROTECTION SHALL ALSO INCLUDE AC PAVING, CONCRETE SLAB OR GUNITE BLANKET PLACED OVER THE PIPELINE ALIGNMENT.
5. 4" GUNITE BLANKET WITH 6" SQUARE x 10 GAGE WIRE FABRIC AT THE ENGINEERS DISCRETION.
6. CONCRETE SHALL BE 560-C-3250.

REVISION	BY	APPR	DATE

PARAG KALARIA R.C.E. 83927 DATE 06/22/2023

SLOPE ANCHOR DETAILS

STD. DWG. NO.
W-5