

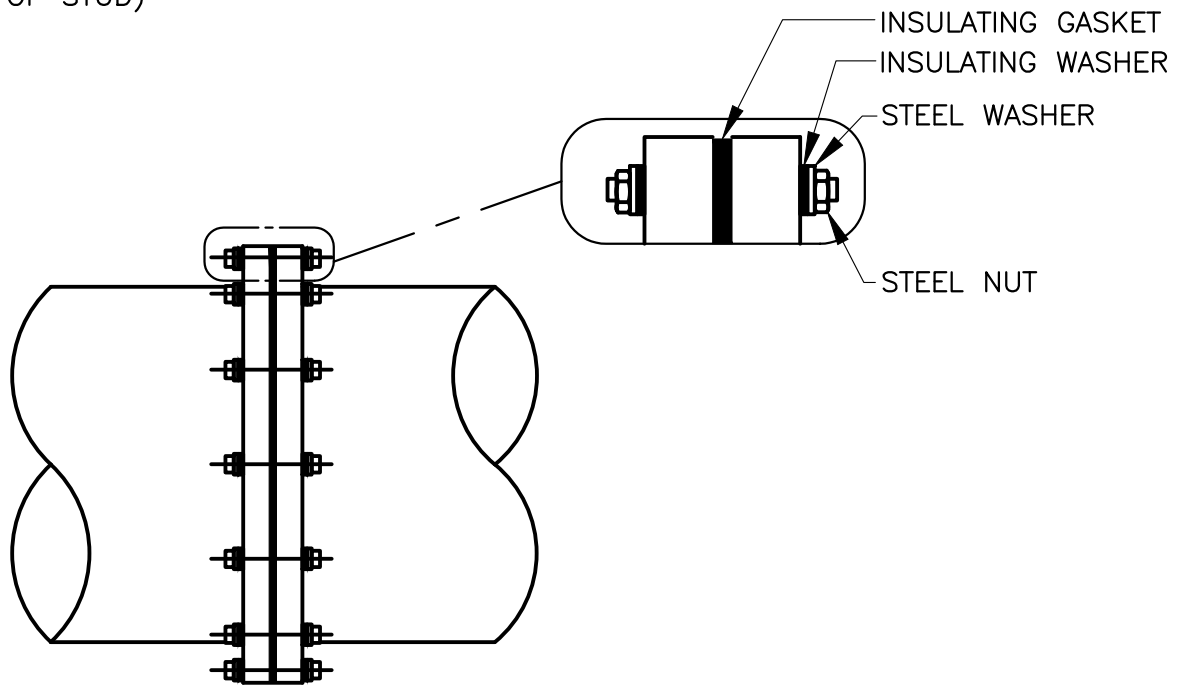
INSULATING SLEEVE (FULL WIDTH OF MATED FLANGES – SEE NOTE 1)

STEEL NUT (2 EA. TYP.)

STEEL WASHER (BOTH ENDS OF STUD)

INSULATING WASHER (BOTH ENDS OF STUD)

STEEL THREADED STUD



INSULATING GASKET

INSULATING WASHER

STEEL WASHER

STEEL NUT

NOTES:

1. USE HALF WIDTH SLEEVES AT THREADED FLANGE BOLTS
2. INSULATING MATERIALS:
 - GASKET– 12” AND GREATER–TYPE “E” FULLFACED NEOPRENE WITH RECTANGULAR NITRILE OR VITON–O–RING SEAL. (PSI LINEBACKER OR EQUAL).
 - 12” OR LESS–TYPE “E” FULLFACED NEOPRENE FACED PHENOLIC
 - SLEEVE– 1/32–INCH THICK, FULL LENGTH TUBE, LAMINATED G–10 GLASS
 - WASHER– 1/8–INCH THICK LAMINATED G–10 GLASS.
3. ALIGN FLANGE PROPERLY AND FOLLOW GASKET MANUFACTURER BOLT TIGHTENING SEQUENCE INSTRUCTIONS.
4. DO NOT PAINT OUTER SURFACE OF FLANGE WITH METALLIC PIGMENTED OR CONDUCTIVE PAINTS.
5. TEST MATED FLANGE WITH GAS ELECTRONICS MODEL 601 INSULATION CHECKER (OR EQUIVALENT). PRIOR TO ACCEPTANCE. SEE STD. SPEC. 15310.

REVISION	BY	APPR	DATE

PARAG KALARIA R.C.E. 83927 DATE

**INSULATING FLANGE KIT
MATERIALS**

STD. DWG. NO.
CP-5