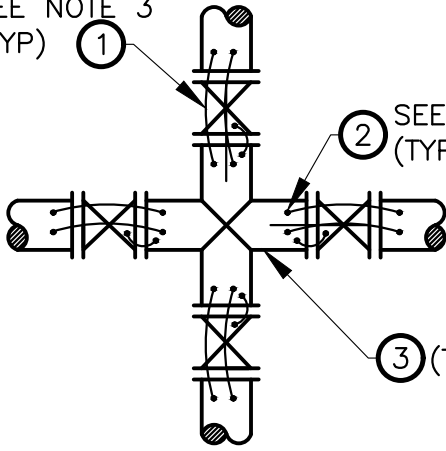
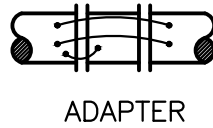
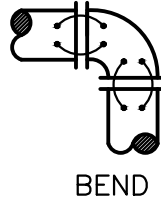
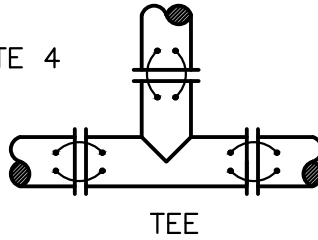


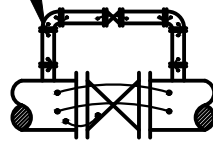
SEE NOTE 3
(TYP) ①



SEE NOTE 4
(TYP) ②

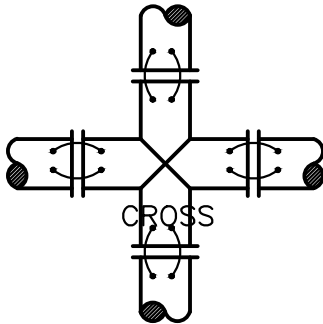


SEE NOTE 5



VALVE WITH BYPASS

VALVE CROSSING



NOTES:

1. ALL BOND WIRES SHALL BE INSTALLED AT MINIMUM LENGTHS.
2. BOND WIRES SHALL NOT BE INSTALLED ACROSS INSULATING JOINTS.
3. FOR PIPE DIAMETER 36" AND LARGER, ONE ADDITIONAL BOND WIRE IS REQUIRED FOR MAINLINE BONDING.
4. THE MINIMUM PIPE WALL THICKNESS FOR EXOTHERMIC WELDING IS 0.133", OTHERWISE PIN BRAZED CONNECTIONS ARE REQUIRED.
5. ONLY ONE BOND WIRE IS REQUIRED WHEN BONDING VALVE BYPASS PIPING.
6. BOND WIRES SHALL BE SPACED 5" APART, MINIMUM.
7. WAX TAPE ALL BURIED BOLTED FITTINGS PER AWWA C217, OVERLAPPING THE SHOP APPLIED COATING A MINIMUM OF 3 INCHES.

MATERIAL LIST:

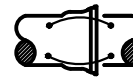
- ① BOND WIRE: AWG #4 STRANDED COPPER WITH HMWPE INSULATION
- ② EXOTHERMIC WELD OR PIN BRAZE PER CP-6
- ③ METALLIC PIPE



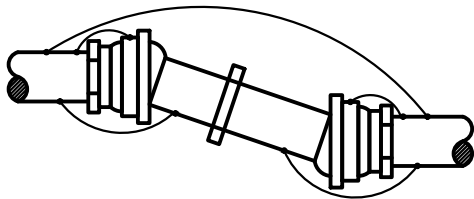
FLANGE



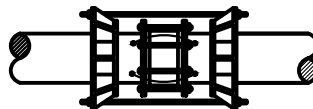
VICTAULIC COUPLING



PUSH ON RUBBER GASKET PIPE JOINT



FLEXIBLE JOINT



RESTRAINED SLEEVE COUPLING



SLEEVE COUPLING

REVISION	BY	APPR	DATE

ELSINORE VALLEY
MUNICIPAL WATER DISTRICT

06/22/2023
PARAG KALARIA R.C.E. 83927 DATE

JOINT BONDING OF NON-WELDED PIPE JOINTS & FITTINGS

STD. DWG. NO.
CP-10