

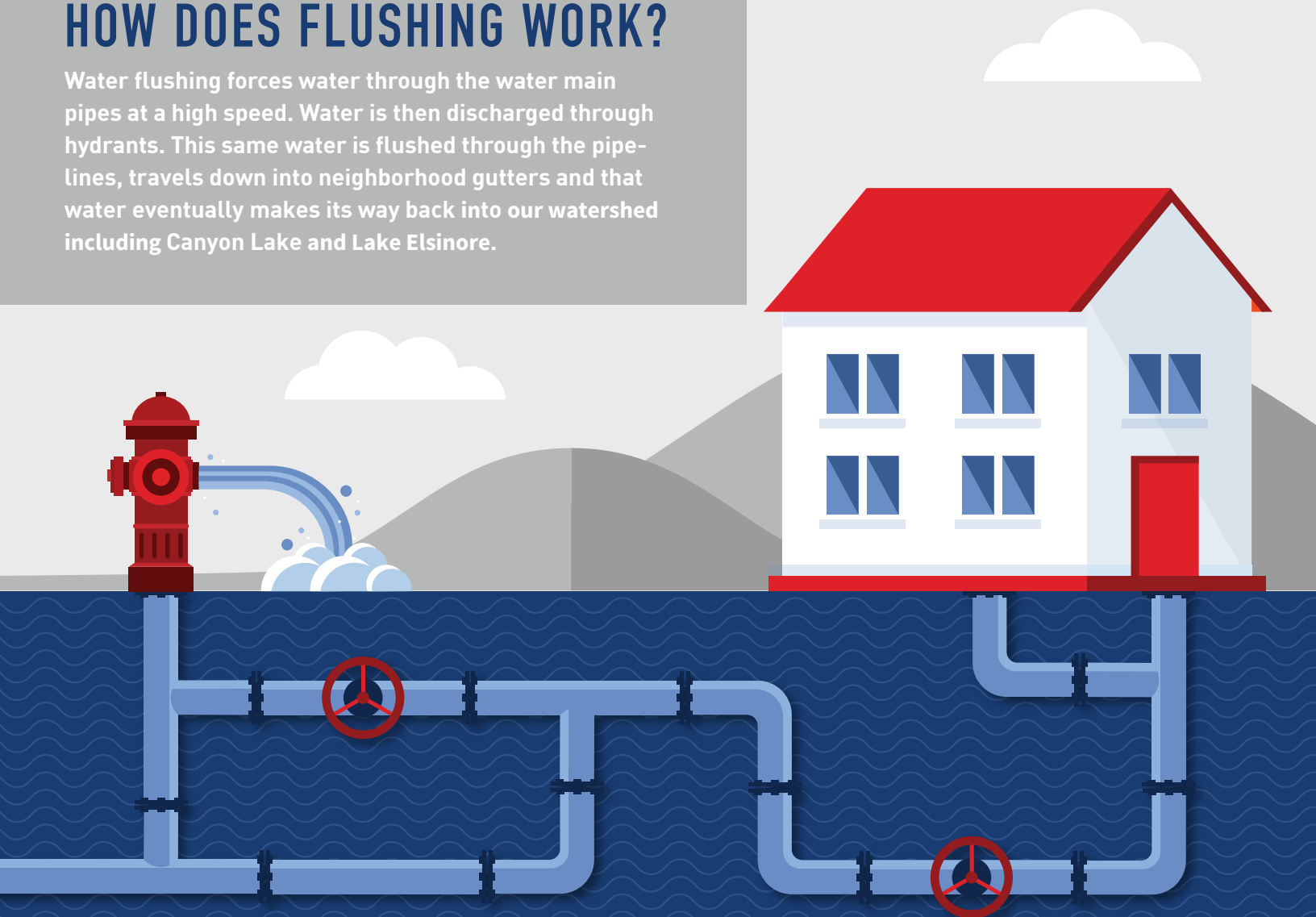
FLUSHING

It's Not Water Waste, It's Water Quality

Elsinore Valley Municipal Water District's water flushing program maintains water quality throughout the service area.

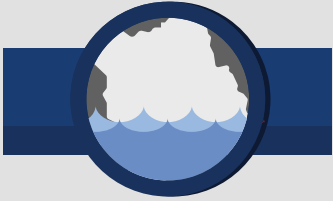
HOW DOES FLUSHING WORK?

Water flushing forces water through the water main pipes at a high speed. Water is then discharged through hydrants. This same water is flushed through the pipelines, travels down into neighborhood gutters and that water eventually makes its way back into our watershed including Canyon Lake and Lake Elsinore.



WHY IS FLUSHING IMPORTANT?

Flushing is an important part of EVMWD's water maintenance system to reduce unpleasant taste and odor and keep systems working efficiently.



Strips off biofilm growth that can occur when water in a pipeline has lower demand



Ensures that hydrants and valves are working properly in an emergency



Reduces corrosion through scouring the inside of the water pipeline



Removes many deposits, sediment and other materials that can affect taste and odor



DID YOU KNOW, HYDRANT FLUSHING...

- ✓ is required by the State Water Resources Control Board
- ✓ is a routine part of ensuring customers receive high-quality water 24/7
- ✓ removes sediments and other deposits that naturally occur
- ✓ verifies hydrants are properly working

IS EVMWD FLUSHING IN YOUR NEIGHBORHOOD?

- You may experience a temporary cloudiness to water and water pressure fluctuations.
- It's common to notice slightly discolored water coming from your faucets. This discoloring is temporary and only affects the appearance of water; it does not cause a health or safety risk.
- If water is discolored after water flushing, run cold tap water for a few minutes and water should run clear.

Experiencing discoloration for a prolonged time or a significant loss of water pressure following hydrant flushing? Call EVMWD's Operations Department at 951-674-3146 x8305 for assistance.